

Modelagem BIM

Integração e Interdisciplinaridade



Leandro Brito de Gouvêa

Engenheiro Civil

Especialista em BIM.



José Luiz Campanholo

Engenheiro Civil

Especialista em gerenciamento de obras e planejamento e gestão de negócios.



integração

interdisciplinaridade

casos



integração

=

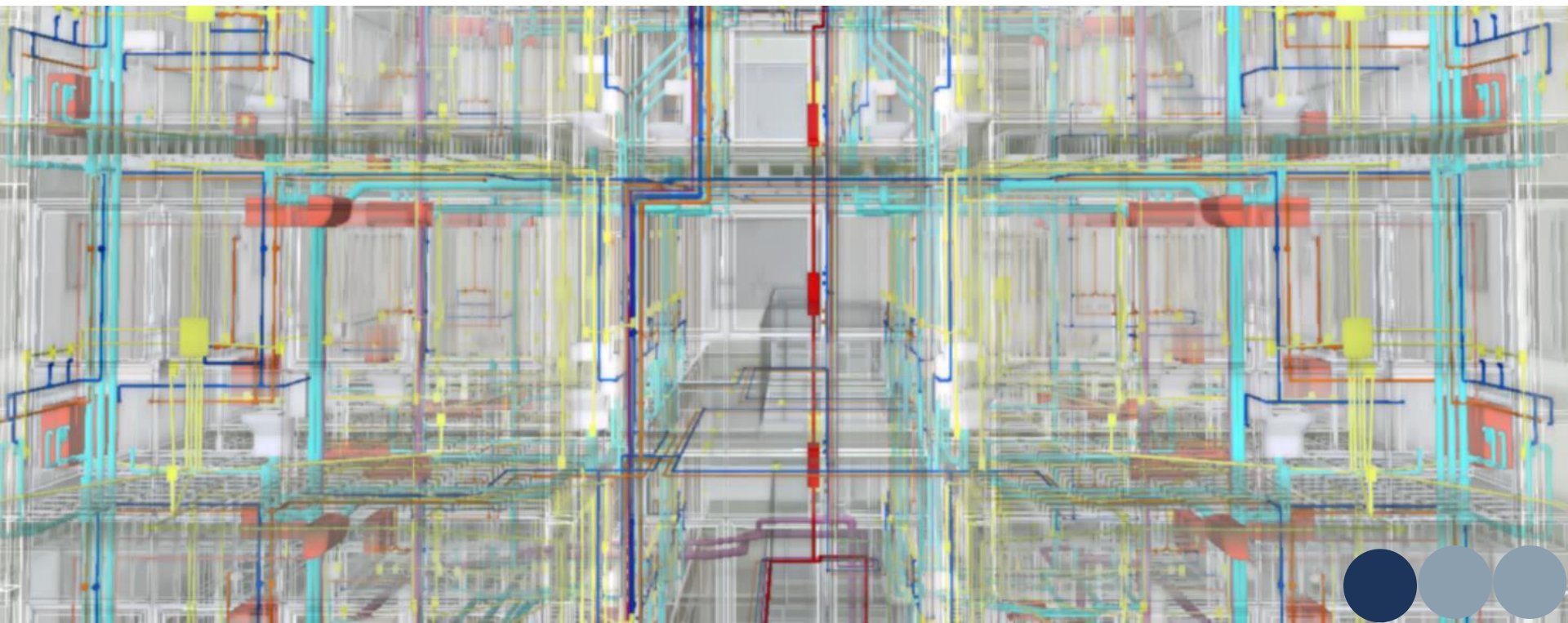
comunicação eficiente





Plataforma comum a todos os participantes

Liv São Francisco
Cubo Incorporações
Modelo BIM por cwbin





1. Fluidisez até en



IFC2x3 CV2.0





interdisciplinaridade

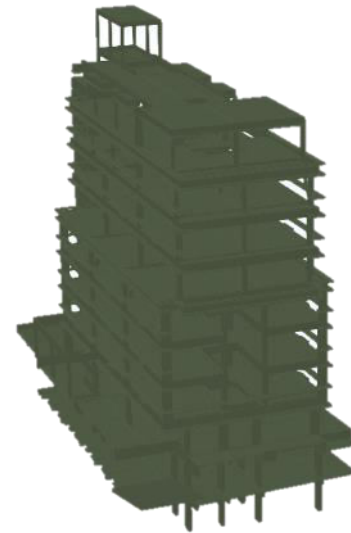
=

comunicação eficaz

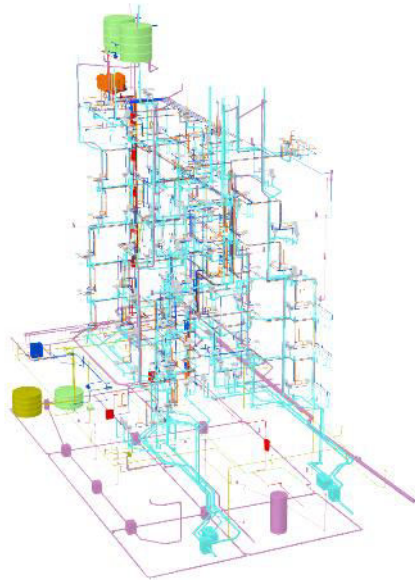




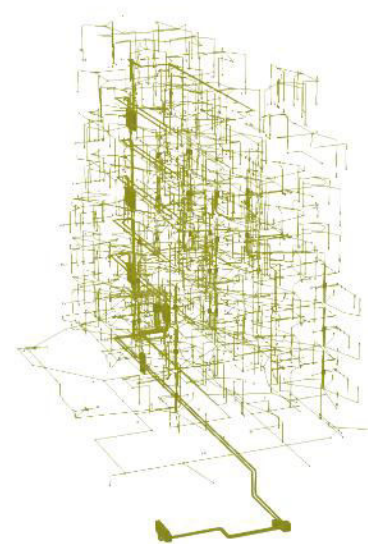
Arquitetura



Estrutura



Hidráulico





Elétrico




A fazer

- ARQ - Lajes e forros VD
- COO - Orçamento da arquitetura 
- COO - Orçamento das instalações elétricas 
- COO - Orçamento de ar condicionado 
- COO - Orçamento da pressurização e exatustão 
- COO - Orçamento da automação 
- COO - Orçamento da estrutura 
- COO - Orçamento da prevenção de incêndio 
- COO - Orçamento da contenção e fundação 








Fazendo


- ARQ - Esquadrias VD
- COO - Orçamento das instalações hidráulicas 
- STR - Modelagem da estrutura 

Add a card...



Revisão

- HID - Contenção de cheias  Oct 10 VD
- HID - Louças sanitárias  3
- HID - Água fria  Oct 8
- 
HID - Esgoto  6 1 Oct 1
- HID - Águas pluviais  Oct 6
- HID - Incêndio  Oct 10

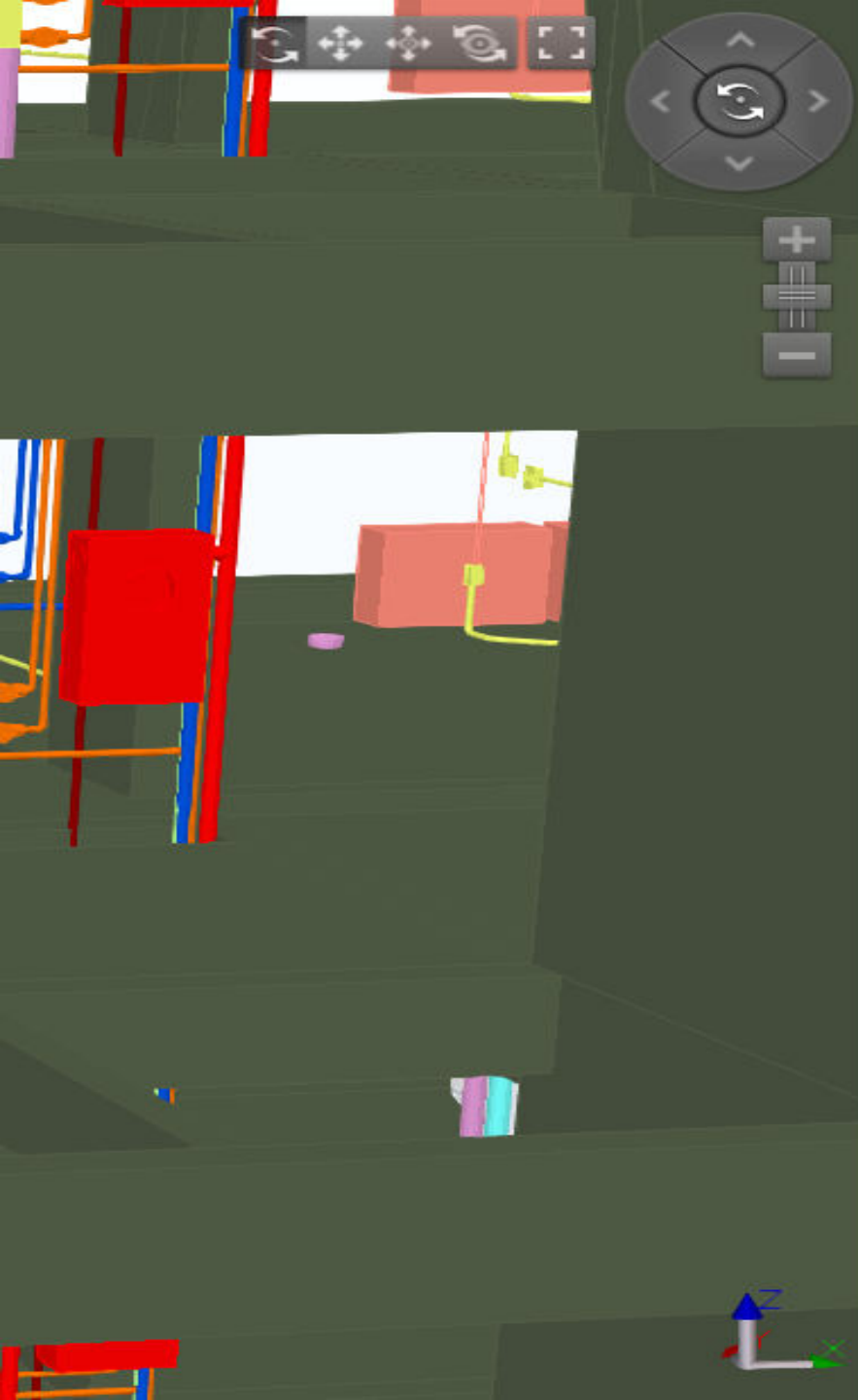


Feito

- TOP - Topo  

Add a card...






Conversa ▼ Coordenação ▼

Public note Private note

 **6 min** 

 **Brito de Gouvêa Leandro**

Gostaria de saber se está tudo correto com o posicionamento das tubulações e equipamentos.

Object(s): 0




 **Balduino Adriano** 1 minutos ago

Foi verificado e o tamanho do Shaft atende as nossas necessidades.


 **Balduino Adriano** less than a minute ago

A caixa de incêndio está com as mesmas dimensões previstas em projeto?



 **Brito de Gouvêa Leandro** less than a minute ago

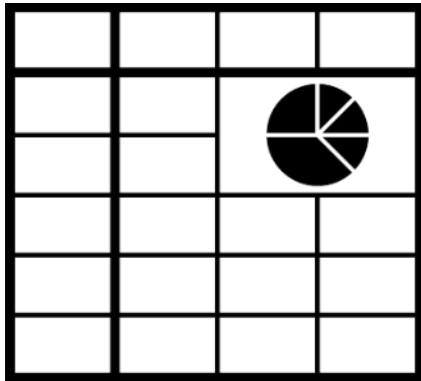
Sim. Além das previstas em projeto também foi verificado com os catálogos técnicos.



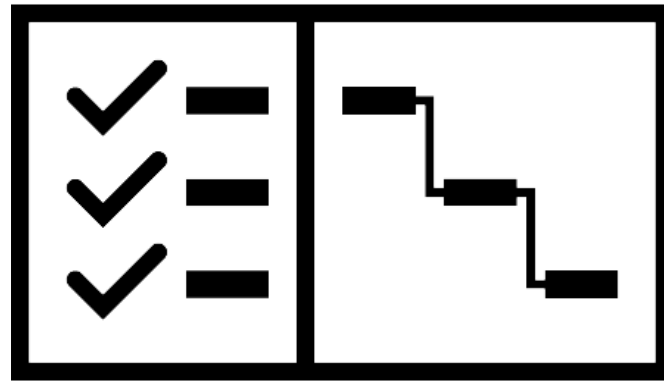




Nome	Janelas			Quantidade
	Vista 3D	Altura (m)	Espessura (m)	
CB2		1,0	1,0	4
CB3		1	1,0	1
CB3		1,2	1,2	1
CB4		0,5	0,97	2
CB4		1,0	1,0	1
		1,0	1,0	1



custo



prazo





coordenação de projetos

compatibilização

estudos de viabilidade

planejamento de prazo e custo

consultoria de implantação BIM





Casos



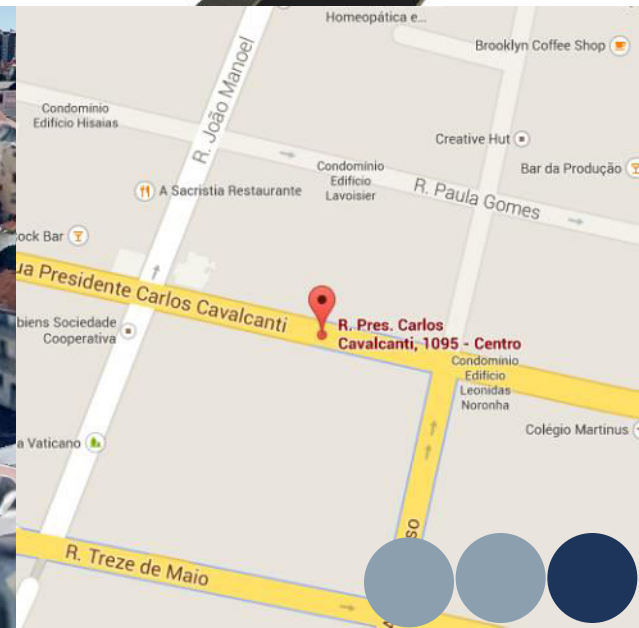
Liv São Francisco

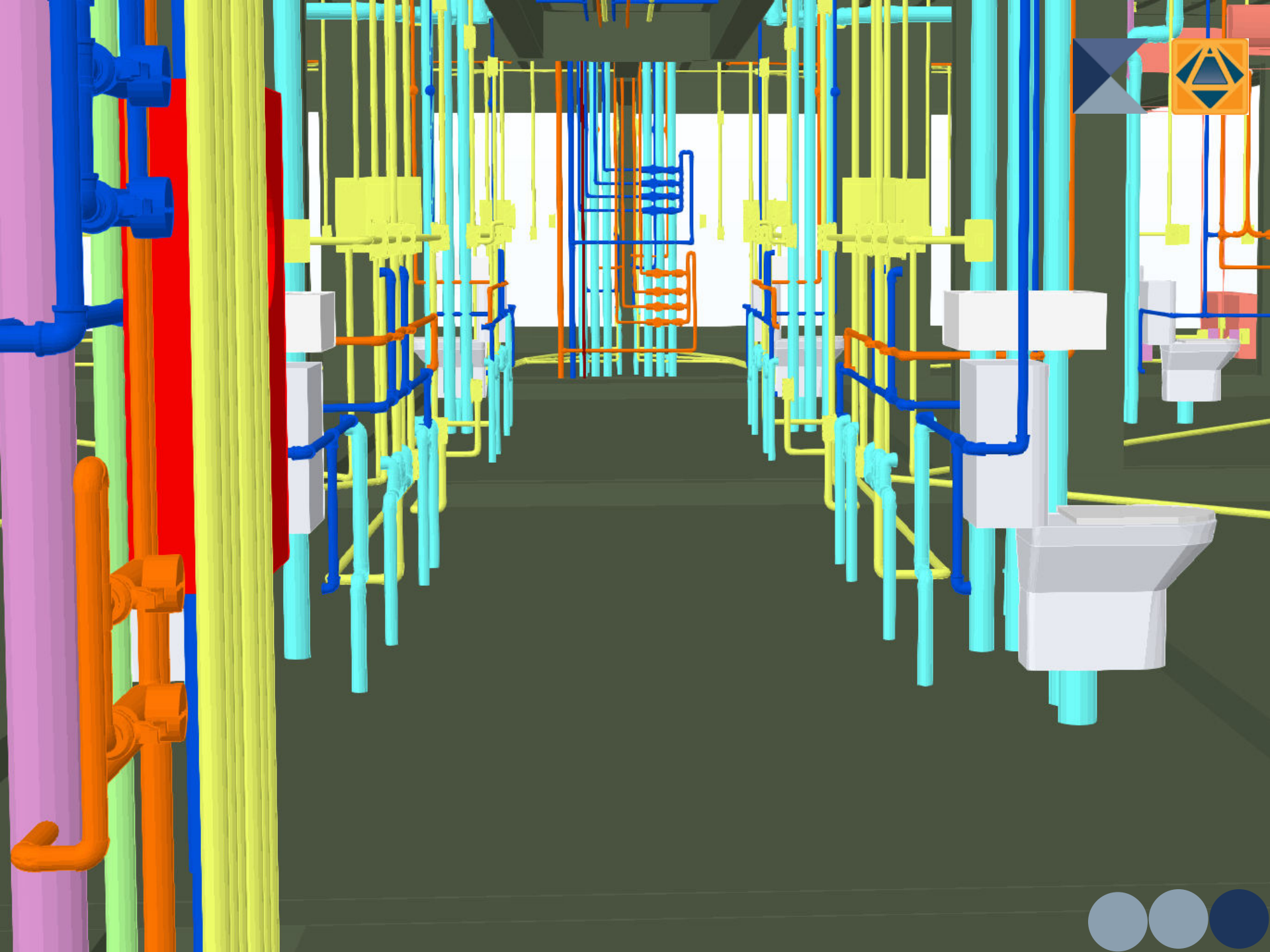
Cubo incorporações

3.970 m²

Residencial

São Francisco, Curitiba - PR





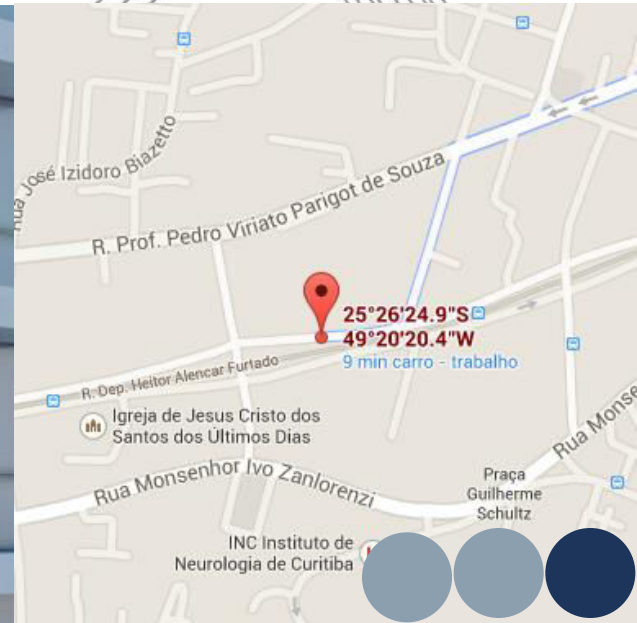
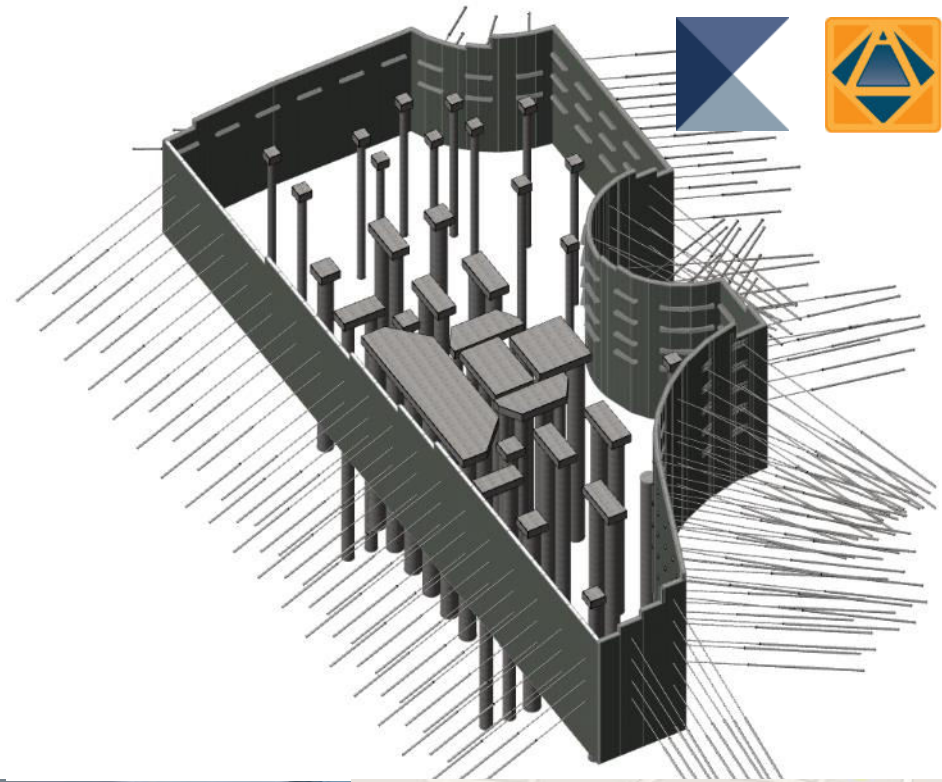
MAI

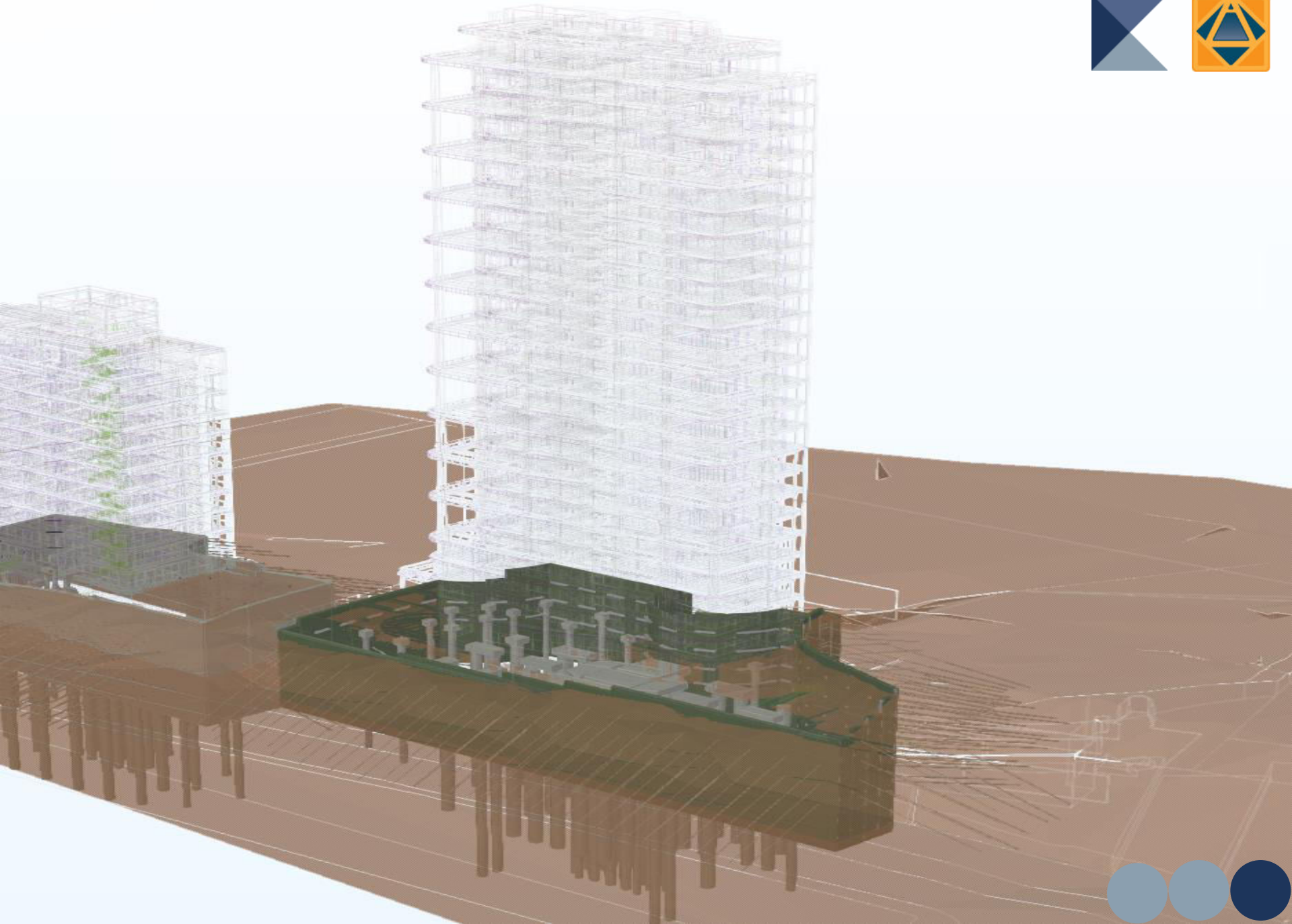
Laguna Construtora e Incorporadora

26.440 m²

Residencial e Comercial

Ecoville, Curitiba - PR





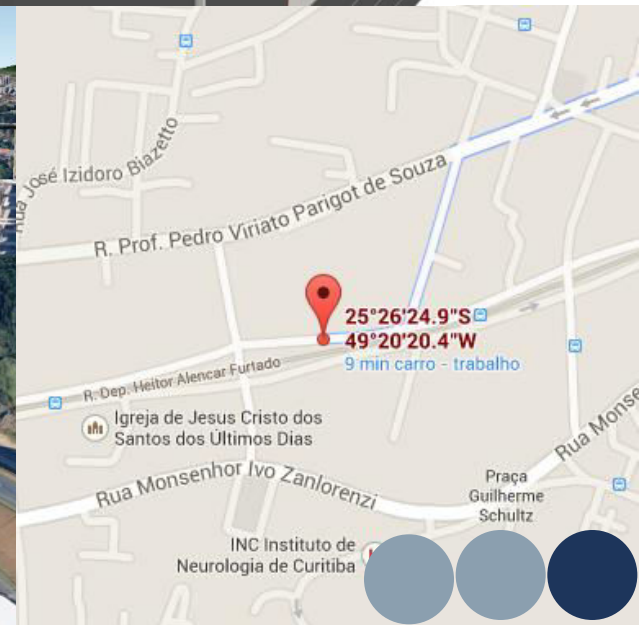
Opus One

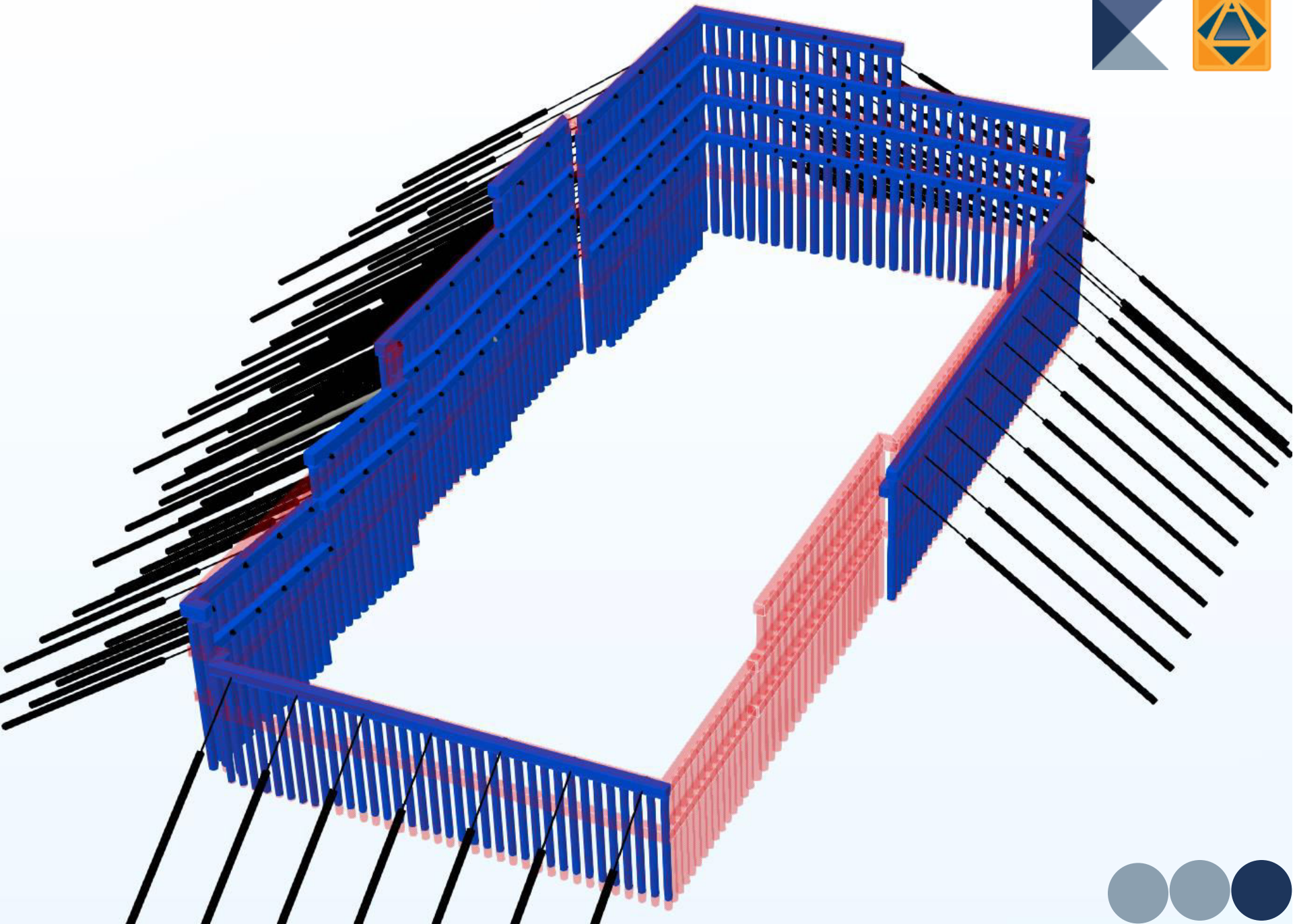
Cron Engenharia

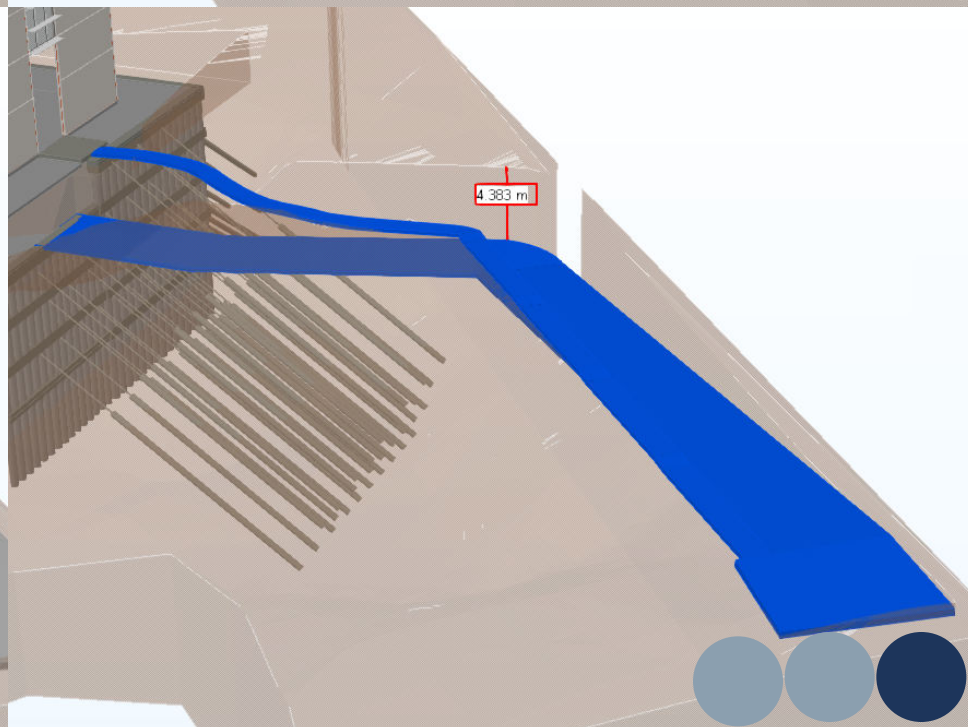
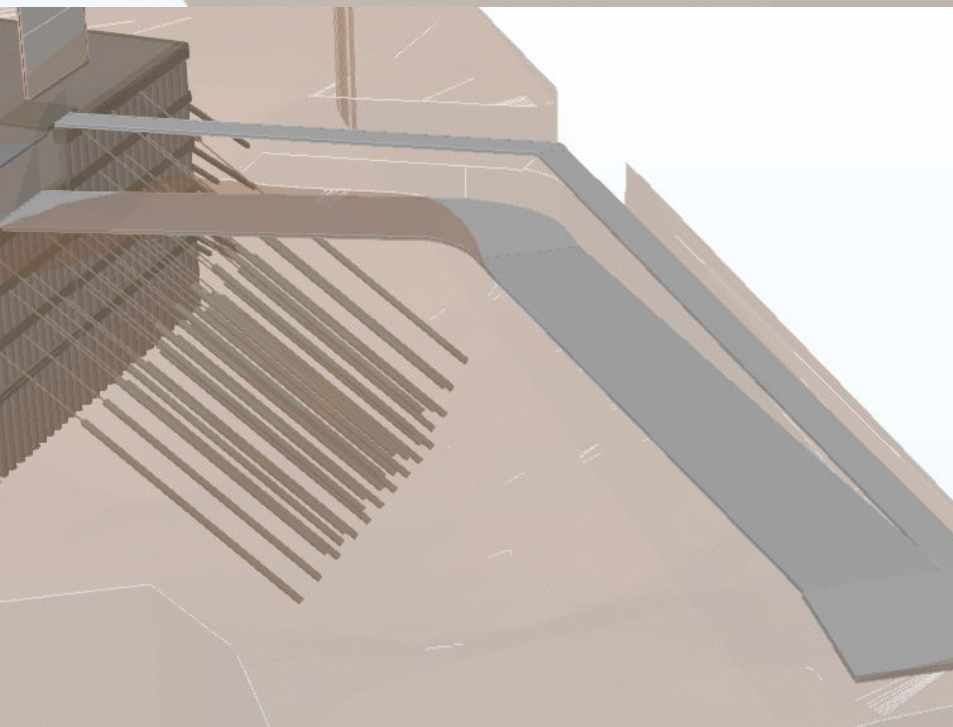
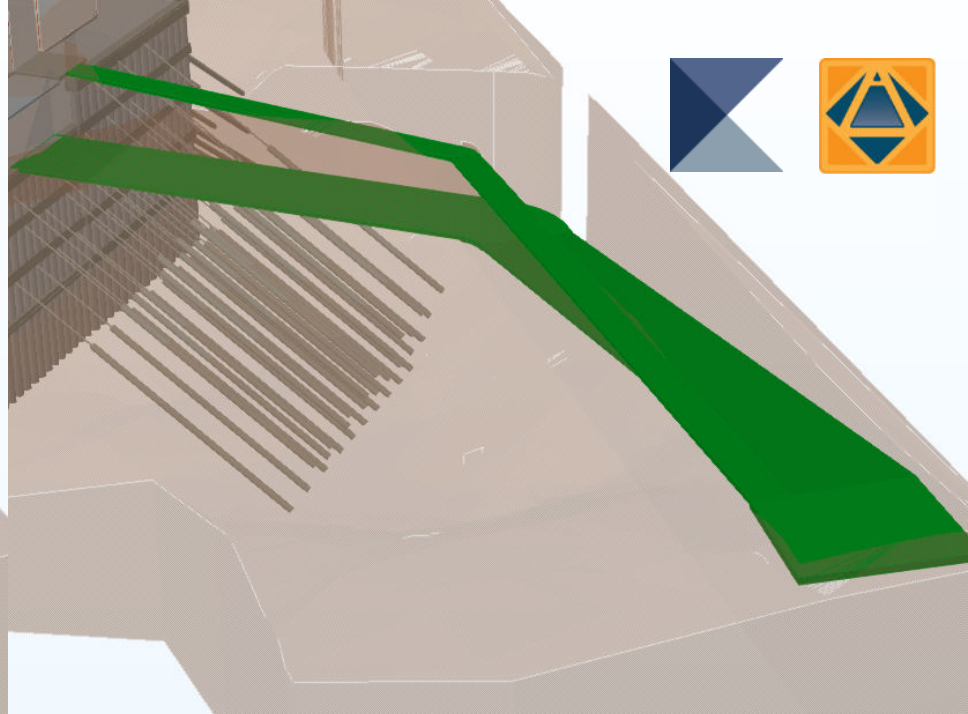
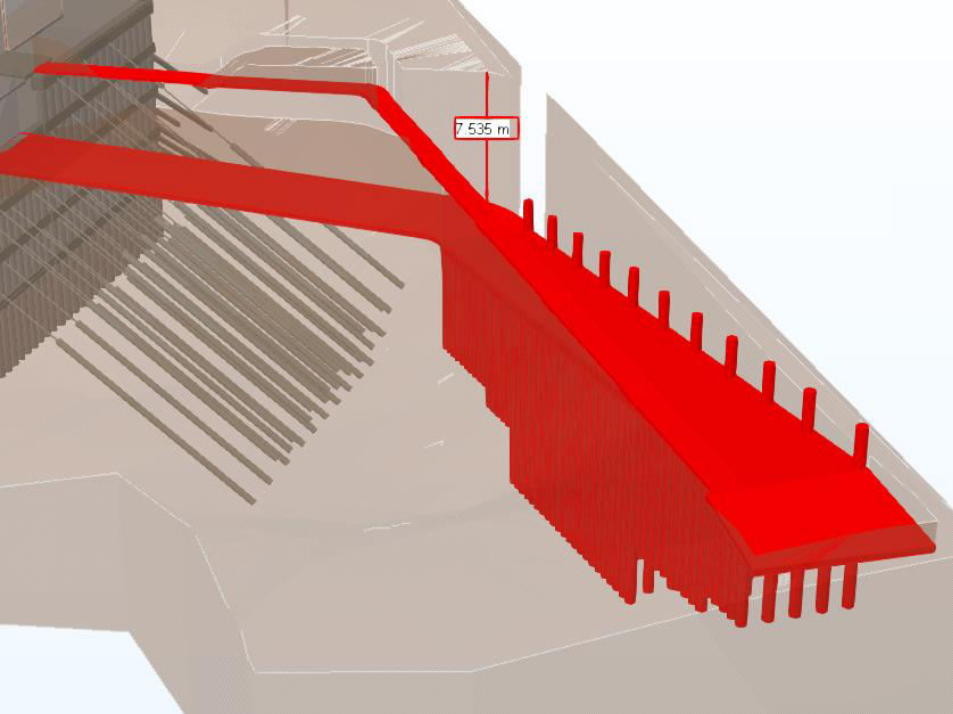
24.219 m²

Comercial

Ecoville, Curitiba - PR







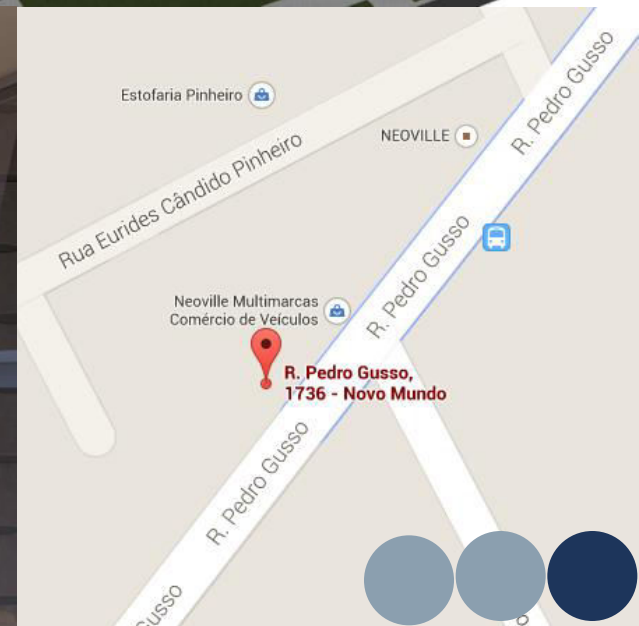
Neoville Center Mall

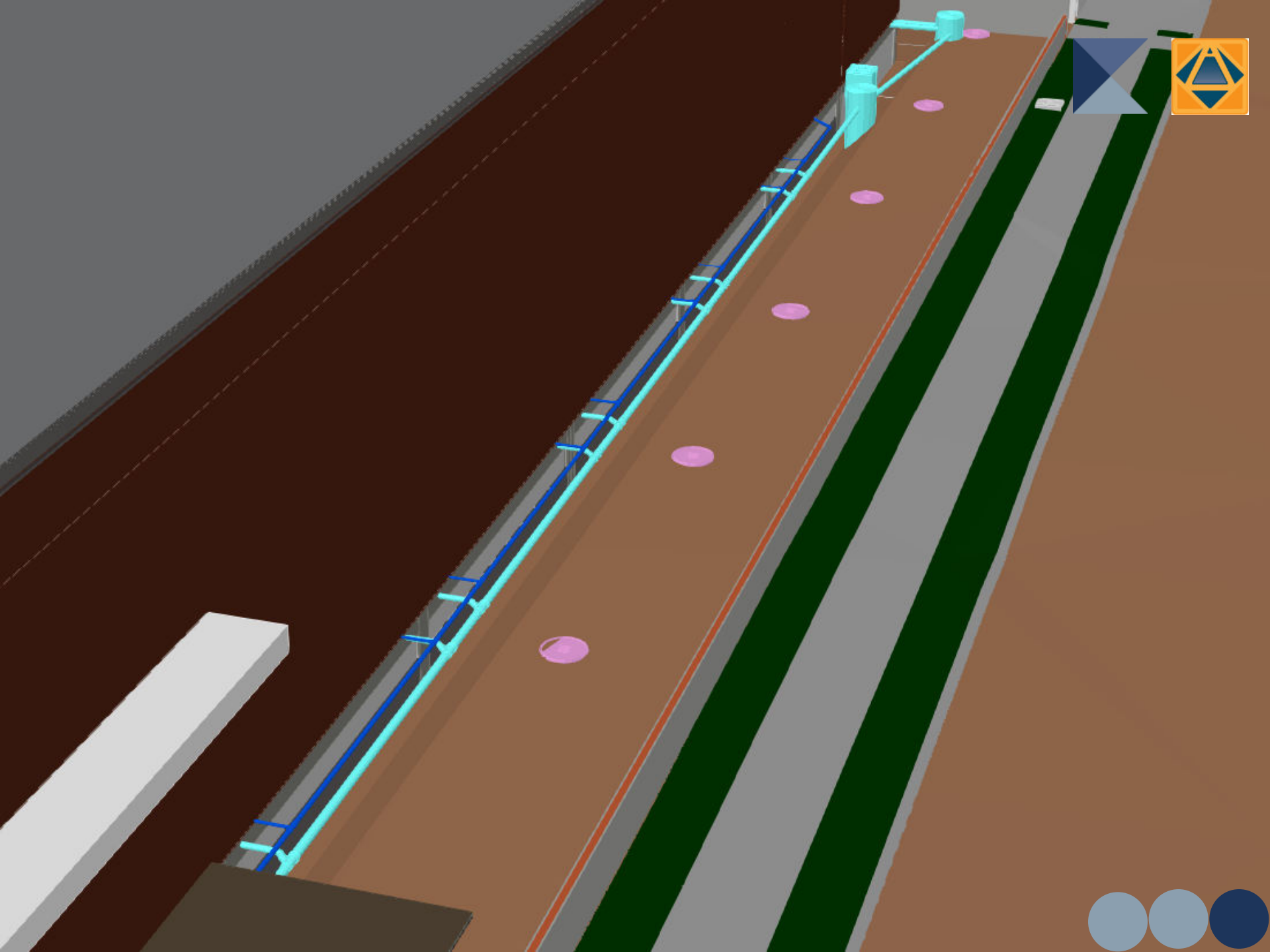
Cron Engenharia

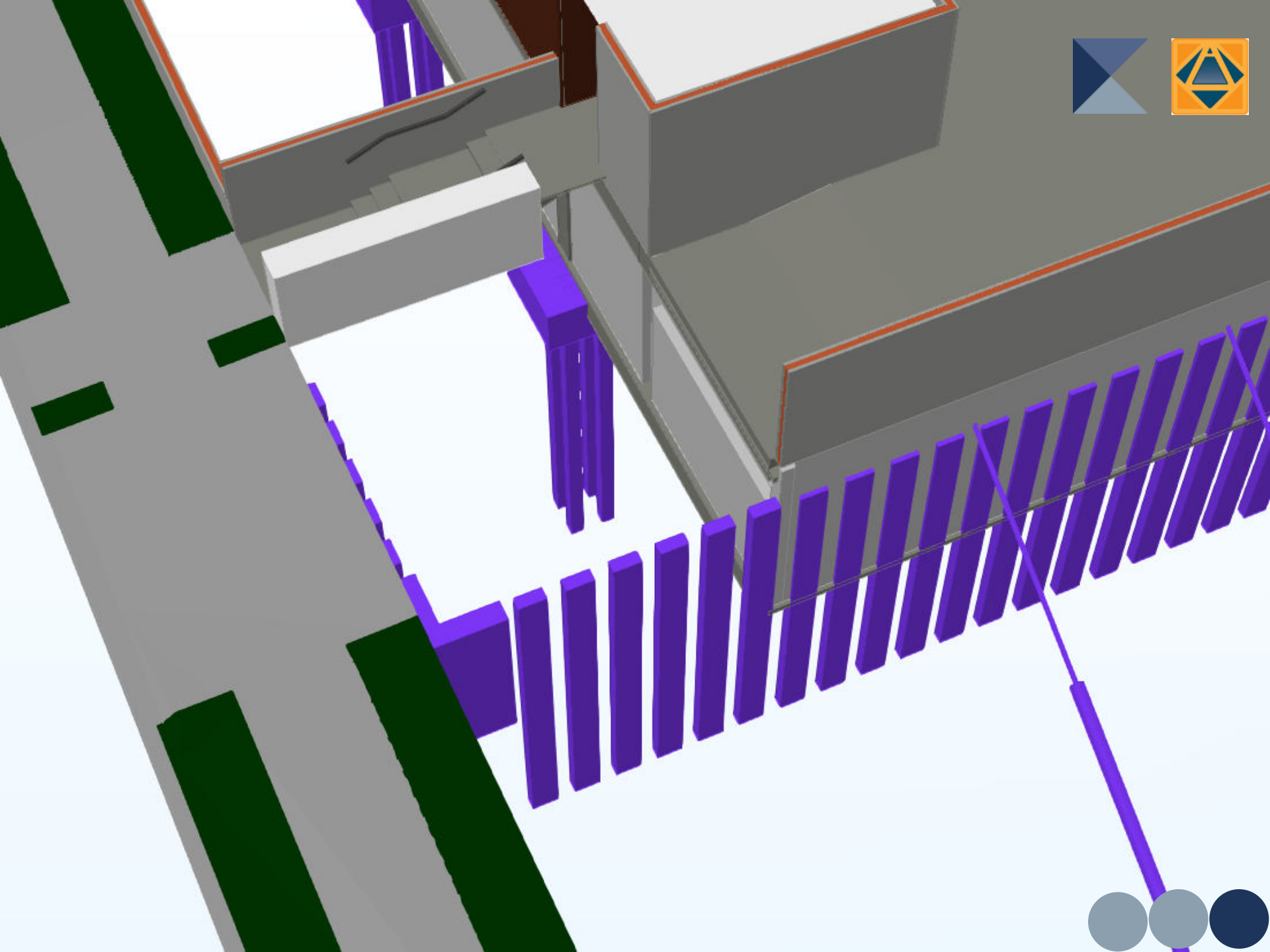
6.055 m²

Comercial

CIC, Curitiba - PR









Hotel Adágio Silva
Jardim



Sindicato dos
Metalúrgicos



Castel Sanpietro

Equipe



Adriano Balduino dos
Santos



Leandro Brito de
Gouvêa



Vitor Hugo Dentello



José Luiz Campanholo

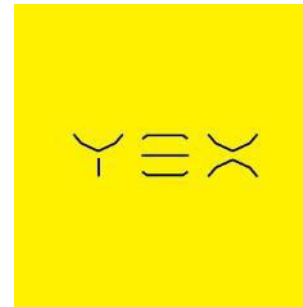


Alexandre Luis Ganz

clientes



parceiros



HaveIT!

Capacitação Tecnológica



agradecimentos

